

THE PERFECT COMPLEMENT

The extensive range of LISTA cabinets enables you to customise and add to your workspace and storage equipment. The high-quality steel cabinets can be easily integrated into a variety of working environments and individually adapted to your specific requirements. They are suitable both for industrial purposes and for storing files and similar items in offices and administrative departments. And of course your personal belongings are always kept safe in a LISTA cabinet.



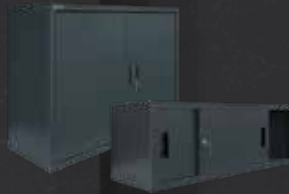
The right solution for every need



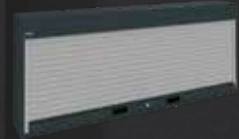
Hinged door cabinets
see p. 170



Sliding-door cabinets
see p. 178



Wall-mounted cabinets with hinged or sliding doors
see p. 184



Wall-mounted cabinets with roller shutter
see p. 186



Roller shutter cabinets
see p. 188



Vertical pull-out cabinets
see p. 190



Heavy-duty cabinets
see p. 192



Clothing lockers
see p. 196



Compartment cabinets
see p. 202



Battery charging cabinets
see p. 204



Laptop cabinets and battery charging cabinets for electric scooters
see p. 210



Battery charging cabinets as an e-bike charging station
see p. 214



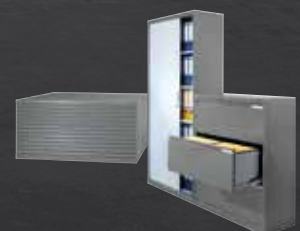
Environmental and oil cabinets
see p. 216



Containers and large-scale pin cabinets*



Firefighter lockers*



Office cabinets*

LISTA hinged door cabinets provide secure and orderly storage for a variety of items. All cabinets can be configured individually and adapted to your specific storage needs through the flexible use of partition materials and cabinet accessories.

! ALWAYS WITH LISTA

Choice of colours

12 standard colours, all other colours available; see p. 22

Intelligent locking systems

Replaceable cylinders which can be fitted to existing locking systems, electronic locking systems via CODE and RFID Lock for absolute security made to measure; see p. 28

Individual configuration options

in size, equipment, locking system, colour and drawer partitions; see p. 10



Utmost stability

with housing load capacity of up to 500 kg



High load capacities

load capacity of 60 kg or 100 kg per adjustable shelf, 60 kg per drawer/pull-out shelf



Well protected

protection from dirt, liquids and physical loads thanks to closed housing with impact-resistant and abrasion-resistant surface



Flexible configuration options

with covers, perforated panels, suspension folder pull-outs, desk mounts and clothes rails



Optimum order and organisation

with optional installation of drawers and pull-out shelves for clear and orderly storage of small parts (for a cabinet depth of 580 mm)



Perfectly organised

with viewing windows made from UV-resistant, shatterproof acrylic



Secure locking

with solid sheet or viewing window doors (flush-fitting, folded from one piece) and intelligent locking systems



Can be adapted to new storage items at any time

with the flexible integration and rearrangement of drawers, pull-out shelves and adjustable shelves in increments of 25 mm

Cabinet systems | Hinged door cabinets

Hinged door cabinets

Depending on the model, the cabinets on these two pages are equipped with: adjustable shelves, galvanised, 30 mm thick, load capacity 60 kg. Pull-out shelves and drawers, painted, anthracite grey, RAL 7016, load capacity 60 kg. **Note: Cabinets with drawers and pull-out shelves come with floor anchoring as anti-tilting device.**



Art. no. **58.658.200**
Anthracite grey, RAL 7016
(excluding partition material)



Art. no. **62.203.030.C**
Reseda green, RAL 6011

H ↑ 1000 mm

W → **D** ↗ Adjustable shelves Drawers Pull-out shelves Hinge pins mounted Art. no.

Cabinets with 1 solid sheet door

500	400	1	-	-	60	Hinge	KEY Lock	62.150.XXX
500	500	1	-	-	60	Hinge	KEY Lock	62.151.XXX
500	580*	1	-	-	60	Hinge	KEY Lock	58.280.XXX



500	400	2	-	-	60	Hinge	KEY Lock	62.152.XXX
500	500	2	-	-	60	Hinge	KEY Lock	62.153.XXX
500	580*	2	-	-	60	Hinge	KEY Lock	58.283.XXX

500	580*	2	1×95	-	50/60	Hinge	KEY Lock	58.652.XXX
-----	------	---	------	---	-------	-------	----------	-------------------

Cabinets with 2 solid sheet doors

1000	400	2	-	-	60	Hinge	KEY Lock	60.460.XXX
1000	500	2	-	-	60	Hinge	KEY Lock	60.461.XXX
1000	580*	2	-	-	60	Hinge	KEY Lock	58.656.XXX



1000	580*	2	1×95	-	50/60	Hinge	KEY Lock	58.658.XXX
------	------	---	------	---	-------	-------	----------	-------------------



Hinged

- for the installation of drawers and pull-out shelves, doors must be fitted with hinges
- doors are flush with the cabinet housing
- opening angle approx. 115°



Perfect storage

All hinged door cabinet drawers can be fitted individually with LISTA partition material to ensure the correct storage of small parts within the drawers.

H ↑ 1950 mm

W → **D** ↗ Adjustable shelves Drawers Pull-out shelves Hinge pins mounted Art. no.

Cabinets with 2 solid sheet doors

750	500	4	-	-	60	Hinge	KEY Lock	62.155.XXX
750	580*	4	-	-	60	Hinge	KEY Lock	62.156.XXX



i When ordering a cabinet from these two pages with **CODE** or **RFID Lock**, please add the suffix **"C"** or **"F"**, respectively, to the article number stated in the table (e.g. **62.201.XXX.C**).





Art. no. **58.665.010**
Light blue, RAL 5012



H **1950 mm**



W **D** Adjustable shelves Drawers Pull-out shelves Hinge pins mounted Art. no.

Cabinets with 2 solid sheet doors

1000	400	4	-	-	60	Hinge	KEY Lock	60.418.XXX
1000	500	4	-	-	60	Hinge	KEY Lock	60.419.XXX
1000	580*	4	-	-	60	Hinge	KEY Lock	58.617.XXX
1250	400	4	-	-	60	Hinge	KEY Lock	60.420.XXX
1250	500	4	-	-	60	Hinge	KEY Lock	60.421.XXX
1250	580*	4	-	-	60	Hinge	KEY Lock	60.471.XXX
1000	580*	2	3 × 95	2	50/60	Hinge	KEY Lock	58.665.XXX
1000	580*	2	-	4	50/60	Hinge	KEY Lock	58.662.XXX

Cabinets with 2 viewing window doors

1000	400	4	-	-	60	Hinge	KEY Lock	62.201.XXX
1000	500	4	-	-	60	Hinge	KEY Lock	62.202.XXX
1000	580*	4	-	-	60	Hinge	KEY Lock	60.333.XXX
1250	400	4	-	-	60	Hinge	KEY Lock	60.583.XXX
1250	500	4	-	-	60	Hinge	KEY Lock	60.584.XXX
1250	580*	4	-	-	60	Hinge	KEY Lock	60.585.XXX
1000	580*	2	3 × 95	2	50/60	Hinge	KEY Lock	60.417.XXX
1000	580*	2	-	4	50/60	Hinge	KEY Lock	60.335.XXX

* Retrofitting with drawers and pull-out shelves possible.



Individual arrangements

- with adjustable shelves, drawers and pull-out shelves
- covers, perforated panels, suspension folder pull-outs, desk mounts and clothes rails are available as optional extras



Hinged doors with viewing windows

- for greater transparency of stored items
- encourages order



Cabinet systems | Hinged door cabinets



Art. no. **58.445.070**
Ruby red, RAL 3003
(excluding partition material)



Art. no. **60.472.050**
Metallic grey, NCS S 6502-B

H ↑ 1950 mm, with partition



W → D ↗ Adjustable shelves Drawers Pull-out shelves Hinge pins mounted Art. no.

Cabinets with 2 solid sheet doors and partition

1000	500	10	-	-	60	Hinge	KEY Lock	60.614.XXX
1000	580	10	-	-	60	Hinge	KEY Lock	60.615.XXX
1000	580*	6	6×95	2	50/60	Hinge	KEY Lock	58.445.XXX



Cabinets with 2 viewing window doors and partition

1000	500	10	-	-	60	Hinge	KEY Lock	60.621.XXX
1000	580*	10	-	-	60	Hinge	KEY Lock	60.622.XXX
1000	580*	6	6×95	2	50/60	Hinge	KEY Lock	60.602.XXX

* Retrofitting with drawers and pull-out shelves possible.



Perfect storage

All hinged door cabinet drawers can be fitted individually with LISTA partition material to ensure the correct storage of small parts within the drawers.

H ↑ 1950 mm, with partition and clothes storage



W → D ↗ Clothes storage equipment Hinge pins mounted Art. no.

Cabinets with 2 solid sheet doors, partition and clothes storage

1000	500	1 adjustable shelf usable width 982 mm, 3 adjustable shelves usable width 481 mm, 1 clothes rail with 3 plastic hooks	60	Hinge	KEY Lock	60.472.XXX
------	-----	---	----	-------	----------	-------------------



Cabinets with 2 viewing window doors, partition and clothes storage

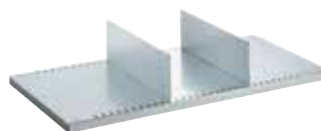
1000	500	1 adjustable shelf usable width 982 mm, 3 adjustable shelves usable width 481 mm, 1 clothes rail with 3 plastic hooks	60	Hinge	KEY Lock	60.611.XXX
------	-----	---	----	-------	----------	-------------------

i When ordering a cabinet from these two pages with **CODE** or **RFID Lock**, please add the suffix **"C"** or **"F"**, respectively, to the article number stated in the table (e.g. **62.201.XXX.C**).





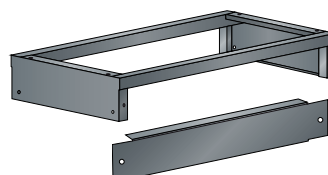
Slotted adjustable shelves
Adjustable shelves including 4 shelf supports. Specification: steel sheet, galvanised, slotted. Long sides folded by 4 × 90°. 30 mm thick with load-bearing capacity of 60 or 100 kg.



Dividers for adjustable shelves
For subdividing adjustable shelves. Specification: steel sheet, painted. Colour: light grey, RAL 7035.



Drawers and pull-out shelves
Full extension with ball bearings, including guide rails. Load capacity 60 kg. Specification: steel sheet. Colour: anthracite grey, RAL 7016. **Only compatible with cabinets with hinges and a depth of 580 mm.**



Base
Robust steel tubing construction 40 × 40 mm, closed side panels, incl. fastening material (screw connection between cabinet and base). Optional: base cover to be attached as a cover on the front or rear. Colour: Anthracite grey, RAL 7016.

» Please contact us for the complete range of accessories.

		W → For cabinet width mm		500	750	1000	1000	1250
		D ↗ For cabinet depth mm		Art. no.	Art. no.	Art. no.	Art. no.	Art. no.
Adjustable shelf		Load capacity kg					with central partition	
400		60		58.100.000	58.103.000	58.106.000	58.100.000	58.109.000
400		100		-	-	60.487.000	-	60.488.000
500		60		58.101.000	58.104.000	58.107.000	58.101.000	58.110.000
500		100		-	-	60.407.000	-	60.408.000
580		60		58.102.000	58.105.000	58.108.000	58.102.000	58.111.000
580		100		-	-	60.409.000	-	60.434.000
		Usable dimensions (W × D mm)		480 × 326/426/506	730 × 326/426/506	980 × 326/426/506	480 × 326/426/506	1230 × 326/426/506
Divider for adjustable shelf								
400		L 311 × H 150 mm		58.144.000	58.144.000	58.144.000	58.144.000	58.144.000
500		L 411 × H 150 mm		58.145.000	58.145.000	58.145.000	58.145.000	58.145.000
580		L 490 × H 150 mm		58.146.000	58.146.000	58.146.000	58.146.000	58.146.000
Drawer		H ↗ Usable height mm						
580		95	72	62.141.000	62.308.000	58.113.000	62.141.000	57.481.000
580		145	122	-	-	57.471.000	-	57.482.000
		Usable dimensions (W × D mm)		357 × 459	617 × 459	867 × 459	357 × 459	1117 × 459
Pull-out shelf		H ↗ Usable height mm						
580		53	43	62.142.000	-	58.115.000	62.142.000	-
		Usable dimensions (W × D mm)		357 × 459		867 × 459	357 × 459	
Base*		H ↗						
500		150		-	97.844.000	98.518.000	98.518.000	98.253.000
580		150		-	98.657.000	98.216.000	98.216.000	97.835.000
Base cover, H 150 mm				-	57.238.000	97.986.000	97.986.000	62.806.000

Screw connections

Hinged door cabinets (for housing height 1000 mm) are designed to allow a second cabinet to be screwed on (one on top of the other). **98.501.000**

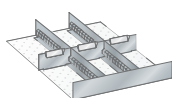


Cabinet systems | Hinged door cabinets

Partition material sets for drawers

W → for 500 mm

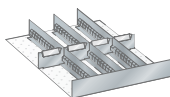
 357 × 459 mm



Slotted dividers and metal separators

For front height mm	Art. no.
95	62.159.000

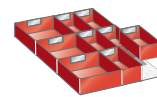
1 slotted partition:	21 E on one side
2 slotted dividers:	27 E
3 metal separators:	7 E



Slotted dividers and metal separators

For front height mm	Art. no.
95	62.160.000

1 slotted partition:	21 E on one side
3 slotted dividers:	27 E
3 metal separators:	5 E
1 metal separator:	6 E



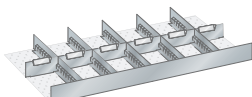
Plastic boxes

For front height mm	Art. no.
95	62.161.000

3 plastic boxes:	150 × 150 × 71 mm
6 plastic boxes:	150 × 75 × 71 mm
1 spacer angle	

W → for 1000 mm

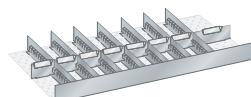
 867 × 459 mm



Slotted dividers and metal separators

For front height mm	Art. no.
95	58.477.000
145	61.163.000

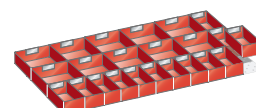
1 slotted partition:	51 E on one side
5 slotted dividers:	27 E
6 metal separators:	4 × 8 E, 1 × 9 E, 1 × 10 E



Slotted dividers and metal separators

For front height mm	Art. no.
95	58.478.000
145	61.164.000

1 slotted partition:	51 E on one side
7 slotted dividers:	27 E
8 metal separators:	7 × 6 E, 1 × 9 E



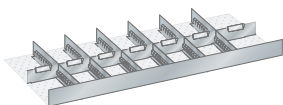
Plastic boxes

For front height mm	Art. no.
95	58.491.000

10 plastic boxes:	150 × 150 × 71 mm
13 plastic boxes:	150 × 75 × 71 mm
1 spacer angle	

W → for 1250 mm

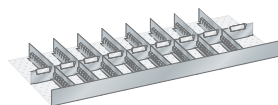
 1117 × 459 mm



Slotted dividers and metal separators

For front height mm	Art. no.
95	61.165.000
145	61.186.000

1 slotted partition:	65 E on one side
6 slotted dividers:	27 E
7 metal separators:	6 × 9 E, 1 × 10 E



Slotted dividers and metal separators

For front height mm	Art. no.
95	61.166.000
145	61.187.000

1 slotted partition:	65 E on one side
8 slotted dividers:	27 E
9 metal separators:	8 × 7 E, 1 × 9 E



Light blue, RAL 5012
(excluding partition material)

i **Suitable labels for partition material**
The practical clip-on label holders are fitted directly onto the metal separators.

» Labelling system see p. 268



Note: the front height corresponds to the drawer front height. For the actual height of the partition material see p. 262–265. Partition material sets excluding clip-on label holder.



Cabinet housing

The housings of the hinged door cabinets are made from high-quality sheet steel and are available with specifications for one or two hinged doors, with or without a fixed partition. The inside fittings of the cabinet are easy to customize thanks to the 25:25 mm divisions.



Hinged doors

The hinged doors in solid sheet or with a viewing window are folded from one piece, flush-fitting and flush with the cabinet housing. The doors can be equipped with hinges, with an opening angle of approx. 115°. The hinged doors can be equipped with a KEY Lock, a CODE Lock or an RFID Lock as desired.

W → For cabinet width mm	500	750	1000	1000 with central partition	1250
--------------------------	-----	-----	------	--------------------------------	------

Cabinet housing

H ↑	Clear height	D ↗	Art. no.	Art. no.	Art. no.	Art. no.	Art. no.
1000	885	400	57.600.XXX	-	57.612.XXX	-	-
		500	57.601.XXX	-	57.613.XXX	-	-
		580	57.602.XXX	-	57.614.XXX	58.431.XXX	-
1950	1835	400	-	57.609.XXX	57.618.XXX	-	57.627.XXX
		500	-	57.693.XXX	57.619.XXX	-	57.628.XXX
		580	-	57.611.XXX	57.620.XXX	58.433.XXX	57.629.XXX

Hinged doors excl. clasp lock

H ↑	Door design	Art. no.	Art. no.	Art. no.	Art. no.	Art. no.
1000	Solid sheet	62.003.XXX	-	62.009.XXX	62.009.XXX	-
	Viewing window	62.307.XXX	-	62.137.XXX	62.137.XXX	-
1950	Solid sheet	-	62.006.XXX	62.011.XXX	62.011.XXX	62.016.XXX
	Viewing window	-	-	62.012.XXX	62.012.XXX	62.017.XXX

+ clasp lock

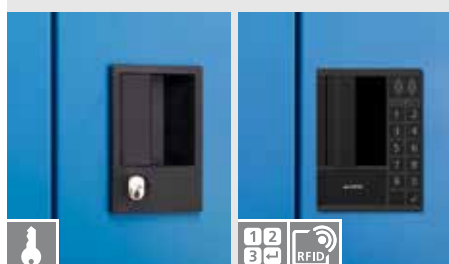
KEY Lock separately lockable	49.060.000	49.060.000	49.060.000	49.060.000	49.060.000
CODE Lock	49.085.000	49.085.000	49.085.000	49.085.000	49.085.000
RFID Lock	49.086.000	49.086.000	49.086.000	49.086.000	49.086.000



i

Clasp locks

The standard KEY Lock locking system with replaceable cylinders makes it easy to adapt to existing locking systems. With CODE Lock, the key is replaced by a simple numeric combination. The LISTA RFID Lock enables automatic and contactless locking through radio frequency identification.



When space is limited, sliding-door cabinets from LISTA are the ideal solution for your storage items. Because the smooth-running doors remain in the housing and do not jut out into the traffic area.

+ Utmost stability
thanks to housing with a load capacity of 500 to 950 kg
(as from a width of 1500 mm)

+ Perfectly smooth running
since the sliding doors are equipped with high-quality,
smooth-running and quiet runners

>> Benefits of LISTA cabinet systems
see p. 168



Cabinet systems | Sliding-door cabinets with solid sheet doors



Art. no. **58.765.010**
Light blue, RAL 5012

H ↑ 1000 mm

W → **D** ↗ Adjustable shelves Drawers Pull-out shelves **kg** **kg** Art. no.

Cabinets with 2 solid sheet doors



1000	400	2	-	-	60	KEY Lock	58.747.XXX
1000	500	2	-	-	60	KEY Lock	58.756.XXX
1000	580	2	-	-	60	KEY Lock	58.757.XXX



1250	400	2	-	-	60	KEY Lock	58.758.XXX
1250	500	2	-	-	60	KEY Lock	58.759.XXX
1250	580	2	-	-	60	KEY Lock	58.760.XXX



Art. no. **58.757.060**
Black, NCS S 9000-N

Cabinets with 2 solid sheet doors and partition



1500	400	4	-	-	60	KEY Lock	58.761.XXX
1500	500	4	-	-	60	KEY Lock	58.762.XXX
1500	580*	4	-	-	60	KEY Lock	58.763.XXX



2000	400	4	-	-	60	KEY Lock	58.796.XXX
2000	500	4	-	-	60	KEY Lock	58.764.XXX
2000	580*	4	-	-	60	KEY Lock	58.765.XXX
2000	580*	2	2 × 95	4	50/60	KEY Lock	58.745.XXX



Sliding-door cabinets

Depending on the model, the cabinets on these two pages are fitted with: adjustable shelves, galvanised, 30 mm thick, load capacity 60 kg, pull-out shelves and drawers, painted, anthracite grey, RAL 7016, load capacity 50 kg



H ↑ 1950 mm

Art. no. **58.750.020**
Light grey, RAL 7035

Cabinets with 2 solid sheet doors

1000	400	4	-	-	60	KEY Lock	58.748.XXX
1000	500	4	-	-	60	KEY Lock	58.749.XXX
1000	580	4	-	-	60	KEY Lock	58.750.XXX

1250	400	4	-	-	60	KEY Lock	58.777.XXX
1250	500	4	-	-	60	KEY Lock	58.778.XXX
1250	580	4	-	-	60	KEY Lock	58.779.XXX

Cabinets with 2 solid sheet doors and partition

1000	580*	8	-	-	60	KEY Lock	58.751.XXX
1500	400	8	-	-	60	KEY Lock	58.780.XXX
1500	500	8	-	-	60	KEY Lock	58.781.XXX
1500	580*	8	-	-	60	KEY Lock	58.782.XXX

2000	400	8	-	-	60	KEY Lock	58.783.XXX
2000	500	8	-	-	60	KEY Lock	58.784.XXX
2000	580*	8	-	-	60	KEY Lock	58.754.XXX
2000	580*	4	-	4	50/60	KEY Lock	58.755.XXX



Lock-down cylinder lock / KEY Lock

The doors cannot be prised out thanks to the right-angled bar used in the locking system.



Extremely smooth running

The ball bearing rollers of the sliding doors run quietly on the guide rails.



Cabinet systems | Sliding-door cabinets with viewing window doors



Art. no. **60.720.070**
Ruby red, RAL 3003



H **1000 mm**

W **D** Adjustable shelves Drawers Pull-out shelves Art. no.

Cabinets with 2 viewing window doors and partition

1500	400	4	-	-	60	KEY Lock	60.715.XXX
1500	500	4	-	-	60	KEY Lock	60.716.XXX
1500	580*	4	-	-	60	KEY Lock	60.717.XXX
2000	400	4	-	-	60	KEY Lock	60.721.XXX
2000	500	4	-	-	60	KEY Lock	60.722.XXX
2000	580*	4	-	-	60	KEY Lock	60.723.XXX
2000	580*	2	2×95	4	50/60	KEY Lock	60.725.XXX



Sliding doors with viewing windows

The UV-resistant acrylic glass is shatterproof and enables clear organisation at the workstation.

H **1950 mm**

W **D** Adjustable shelves Drawers Pull-out shelves Art. no.

Cabinets with 2 viewing window doors and partition

1500	400	8	-	-	60	KEY Lock	60.718.XXX
1500	500	8	-	-	60	KEY Lock	60.719.XXX
1500	580	8	-	-	60	KEY Lock	60.720.XXX
2000	400	8	-	-	60	KEY Lock	60.726.XXX
2000	500	8	-	-	60	KEY Lock	60.727.XXX
2000	580*	8	-	-	60	KEY Lock	60.728.XXX
2000	580*	4	-	4	50/60	KEY Lock	60.729.XXX

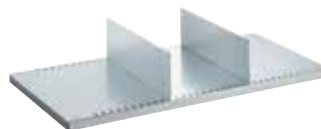


Sliding-door cabinets

Depending on the model, the cabinets on these two pages are fitted with: adjustable shelves, galvanised, 30 mm thick, load capacity 60 kg, pull-out shelves and drawers, painted, anthracite grey, RAL 7016, load capacity 50 kg



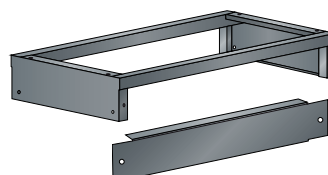
Slotted adjustable shelves
Adjustable shelves including 4 shelf supports. Specification: steel sheet, galvanised, slotted. Long sides folded by 4 × 90°. 30 mm thick with load-bearing capacity of 60 or 100 kg.



Dividers for adjustable shelves
For subdividing adjustable shelves. Specification: steel sheet, painted. Colour: light grey, RAL 7035.



Drawers and pull-out shelves
Full extension with ball bearings, including guide rails. Load capacity 50 kg. Specification: steel sheet. Colour: anthracite grey, RAL 7016. **For cabinet depth 580 mm.**



Base
Robust steel tubing construction 40 × 40 mm, closed side panels, incl. fastening material (screw connection between cabinet and base). Optional: base cover to be attached as a cover on the front or rear. Colour: Anthracite grey, RAL 7016.

		W → For cabinet width mm		1000	1000	1250	1500	2000
					with central partition		with central partition	with central partition
D ↗ For cabinet depth mm	Load capacity kg	Art. no.	Art. no.	Art. no.	Art. no.	Art. no.	Art. no.	Art. no.
Adjustable shelf								
400	60	58.106.000	58.100.000	58.109.000	58.103.000	58.106.000		
400	100	60.487.000	-	60.488.000	-	60.487.000		
500	60	58.107.000	58.101.000	58.110.000	58.104.000	58.107.000		
500	100	60.407.000	-	60.408.000	-	60.407.000		
580	60	58.108.000	58.102.000	58.111.000	58.105.000	58.108.000		
580	100	60.409.000	-	60.434.000	-	60.409.000		
Usable dimensions (W × D mm)		980 × 326/426/506	480 × 326/426/506	1230 × 326/426/506	730 × 326/426/506	980 × 326/426/506		
Divider for adjustable shelf								
400	L 311 × H 150 mm	58.144.000	58.144.000	58.144.000	58.144.000	58.144.000		
500	L 411 × H 150 mm	58.145.000	58.145.000	58.145.000	58.145.000	58.145.000		
580	L 490 × H 150 mm	58.146.000	58.146.000	58.146.000	58.146.000	58.146.000		
Drawer								
	H ↑ Usable height mm							
580	95	72	58.113.000	62.141.000	-	62.308.000	58.113.000	
580	145	122	57.471.000	-	-	-	57.471.000	
Usable dimensions (W × D mm)			867 × 459	357 × 459		617 × 459	867 × 459	
Pull-out shelf								
	H ↑ Usable height mm							
580	53	43	58.115.000	62.142.000	-	-	58.115.000	
Usable dimensions (W × D mm)			867 × 459	357 × 459			867 × 459	
Base								
	H ↑							
500	150		98.518.000	98.518.000	98.253.000	57.277.000	97.103.000	
580	150		98.216.000	98.216.000	97.835.000	97.457.000	97.133.000	
Base cover, H 150 mm			97.986.000	97.986.000	62.806.000	57.239.000	98.259.000	

» Partition material see p. 176

» Please contact us for the complete range of accessories.

* Floor anchoring may be required, depending on the version.



Cabinet systems | Wall-mounted cabinets with hinged or sliding doors



+ Utmost stability
thanks to housing with load capacity of 40 to 80 kg

+ Optimum order and organisation
thanks to adjustable shelves with load capacities of up to 40 kg for neat and tidy storage of tools, files and other equipment

+ User-friendly
since the stored items are easy to reach and at viewing height

+ Perfect cable management
with cable openings and intermediate shelf for tidy and well-protected cable routing

+ Flexible configuration options
thanks to pre-perforated holes (punch-outs) as cable guide for power strips and LED lights

>> Benefits of LISTA cabinet systems
see p. 168

LISTA wall-mounted cabinets are perfect as additional storage space for small parts, documents and more. They keep your storage items ergonomically and conveniently stored at viewing height. Just mount them on the wall and in no time everything is just where it should be: neatly put away.



Art. no. **69.861.200**
Wall-mounted cabinets with sliding doors,
height 420 mm, RAL 7016



Art. no. **69.865.200**
Wall-mounted cabinets with sliding doors,
height 800 mm, RAL 7016

Wall-mounted cabinets

Flush-fitting hinged doors with reinforced edges for increased rigidity, with fulcrum pins, 110 ° opening angle. Sliding doors edged from one piece, low-noise ball-bearing-mounted sliding door guide. Housing incl. punch-outs for power supply to the cabinets. Adjustable shelving (adjustable grid 25 mm) cable compartments under each shelf are optionally available. Base height: 35 mm.

H **420 mm** Clear height 350 mm



		Specification		Door storage/ door guide		Art. no.
1000	350	Punch-outs Optional: Adjustable shelf	40	pin hinge	KEY Lock	69.860.XXX



		Specification		Door storage/ door guide		Art. no.
1000	350	Punch-outs Optional: Adjustable shelf	40	ball bearing	KEY Lock	69.861.XXX

H **800 mm** Clear height 730 mm



		Specification		Door storage/ door guide		Art. no.
1000	350	Punch-outs 1 adjustable shelf	40/80	pin hinge	KEY Lock	69.865.XXX



		Specification		Door storage/ door guide		Art. no.
1000	350	Punch-outs 1 adjustable shelf	40/80	ball bearing	KEY Lock	69.866.XXX



Clasp lock KEY Lock

- standard locking system for hinged doors with replaceable cylinders
- makes it easy to adapt to existing locking systems

Lock-down cylinder lock / KEY Lock

- locking system for sliding doors
- cannot be prised out thanks to the right-angled bar



Extremely smooth running

- the ball bearing rollers of the sliding doors run quietly on the guide rails



Cable feed-through

- punch-outs allow the cabinet to be provided with a power supply, see p. 147
- punch-outs are present on the lid and base
- there is space for cable routing underneath the shelf



Adjustable shelf for wall-mounted cabinet

Width: 1000 mm.
Load capacity: 40 kg.

Art. no. **69.883.XXX**



Cover flap set

Custom-fit flap and cable collar for punch-outs.
Delivery: 2 hinged flaps.
1 cable collar

Art. no. **69.869.000**





Flexible configuration and organisation

thanks to perforated and slotted rear panels, individually configurable with optional adjustable shelves or integrated cable conduit



User-friendly operation

Aluminium roller shutters with spring-loaded coils: self-locking, effortless operation. Optimum use of space with a continuous usable depth of 215 mm



Versatile

also available as top-mounted cabinet without a base for direct mounting onto the worktop, see p. 121



Benefits of LISTA cabinet systems

see p. 168

LISTA wall-mounted shutter cabinet for optimal tool storage. The cabinet can be custom-adapted to your needs with optional accessories such as an adjustable shelf or power conduit.

Wall-mounted cabinet with aluminium roller shutters

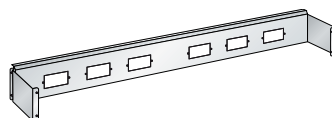
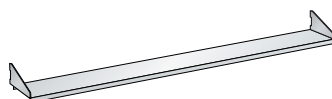
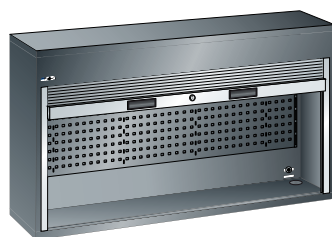
This type of cabinet is ideal for securely hanging tools. The space-saving roller shutter winder gives a maximum usable depth of 215 mm and also allows the use of standard folders. In addition, this cabinet can optionally be equipped with an integrated cable conduit to accommodate the energy modules (see p. 145). For direct fastening to the work-top, this cabinet (1050 mm high) can also be ordered without a floor (see p. 121).



Art. no. **69.851.200**
Wall-mounted cabinet with aluminium roller shutters, RAL 7016

Roller shutter cabinet

Aluminium roller shutter with spring-loaded winding ensures a large usable depth (215 mm) and safe operation (self-locking). The sturdy steel housing and the aluminium roller shutters ensure stable, secure storage. Punch-outs intended for power supply. Perforated rear panel for using perforated wall hooks (see p. 163), with square perforation 10 × 10 and 38 mm divisions.



Model	Fastening	W →	D ↗	H ↑	Art. no.
with floor	on support pillar via perforated rear panel	1500	250	800	69.850.XXX
with floor	on support pillar via perforated rear panel	2000	250	800	69.851.XXX

	W →	D ↗	kg	Art. no.
Adjustable shelf	1500	175	20	69.854.XXX
optional	2000	175	20	69.855.XXX

	for W →	for power modules	Art. no.
Power conduit set	1500	6 ×	89.022.XXX
	2000	8 ×	89.023.XXX

Integrated cable conduit solution. Designed for installation in roller shutter cabinet. The power conduit can be equipped with the power modules. see page 145



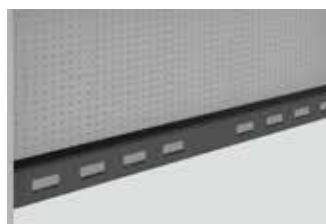
Housing

- Sturdy steel structure
- Version with shelf as an overhead cabinet or alternatively without a shelf as an top-mounted cabinet, see p. 121



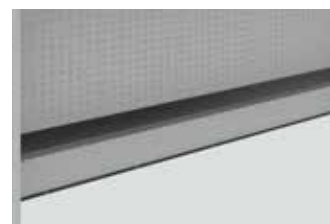
Handle

- Integrated handle
- Locking mechanism has no impact on usable depth
- Locking with KEY lock, keyed alike option also possible on request



Power conduit

- Optionally integrated power conduit
- Configurable with power modules (see page 144)



Adjustable shelf

- Optional adjustable shelf
- Adjustment increment: 25 mm

Cabinet systems | Roller shutter cabinets

LISTA roller shutter cabinets give you full access to your stored items even in confined spaces. And the individual configuration and equipment options mean that they are right for a wide variety of workplaces from workshop to office.

+ Utmost stability

with housing load capacity of up to 500 kg

+ Secure locking

thanks to the smooth-running roller shutters with user-friendly push handle and integrated cylinder lock with replaceable cylinders (other locking systems on request)

+ User-friendly

roller shutter stops at any height without the need for catches

» Benefits of LISTA cabinet systems

see p. 168



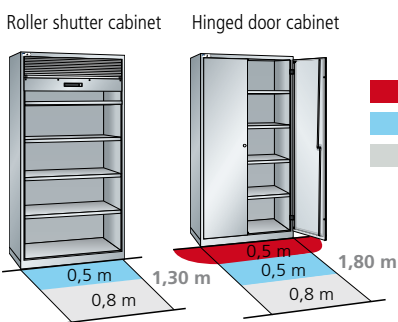
Roller shutter cabinets

Depending on the model, the cabinets on this page are fitted with: adjustable shelves, galvanised, 30 mm thick, load capacity 60 or 100 kg, pull-out shelves and drawers, painted, anthracite grey, RAL 7016, load capacity 50 kg, roller shutter in PVC, colour similar to light grey, RAL 7035



Direct access to all stored items

The smooth-running roller shutter which can be operated with one hand stops at any height without the need for catches.



Art. no. **58.401.010**
Light blue, RAL 5012



Strike plate

The sturdy metal strike plate comes with an anti-trap finger guard for safety reasons.



H ↑ 1950 mm		W → 1000 mm		D ↗ 580 mm*	
Adjustable shelves	Drawers	Pull-out shelves			Art. no.
4	-	-	60	KEY Lock	58.401.XXX
2	-	2	50/60	KEY Lock	58.402.XXX
2	1 × 95	2	50/60	KEY Lock	58.404.XXX
2	-	4	50/60	KEY Lock	58.403.XXX
2	2 × 95	3	50/60	KEY Lock	58.406.XXX
2	1 × 95	4	50/60	KEY Lock	58.405.XXX

* Retrofitting with drawers and pull-out shelves possible.



Push handle cylinder lock/ KEY Lock

The replaceable cylinder makes it possible to adapt the locking system as required.

Slotted adjustable shelves

Adjustable shelves including 4 shelf supports. Specification: steel sheet, galvanised, slotted. Long sides folded by 4 × 90°. 30 mm thick with load-bearing capacity of 60 or 100 kg.

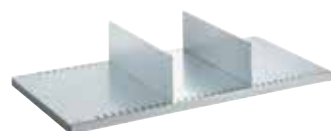
For cabinet depth mm	Load capacity kg	Art. no.
Adjustable shelf		
580	60	58.108.000
580	100	60.409.000
Usable dimensions (W × D mm)		980 × 506



Dividers for adjustable shelves

For subdividing adjustable shelves. Specification: steel sheet, painted. Colour: light grey, RAL 7035.

Divider for adjustable shelf		
580	L 490 × H 150 mm	58.146.000



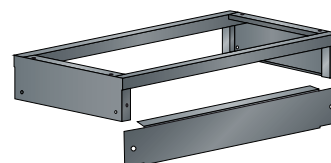
Drawers and pull-out shelves

Full extension with ball bearings, including guide rails. Load capacity 50 kg. Specification: steel sheet. Colour: anthracite grey, RAL 7016.

Drawer		Usable height mm	
580	95	72	58.113.000
580	145	122	57.471.000
Usable dimensions (W × D mm)			867 × 459



Pull-out shelf		Usable height mm	
580	53	43	58.115.000
Usable dimensions (W × D mm)			867 × 459



Base

Robust steel tubing construction 40 × 40 mm, closed side panels, incl. fastening material (screw connection between cabinet and base). Optional: base cover to be attached as a cover on the front or rear. Colour: Anthracite grey, RAL 7016.

Base		
580	150	98.216.000
Base cover, H 150 mm		97.986.000

Partition material see p. 176

Cabinet systems | Vertical pull-out cabinets

- + Utmost stability**
with a housing load capacity of up to 1000 kg
- + High load capacities**
vertical pull-outs with a load capacity of up to 200 kg
- + Perfectly smooth running**
can be fully extended on smooth-running plastic runners even with heavy weights off-floor
- + Outstanding safety features**
through standard single-drawer blocking system
- + Secure locking**
thanks to front covers or hinged doors with KEY Lock including replaceable cylinders (other locking systems are available on request)
- + Flexible configuration options**
with adjustable shelves, perforated panels and shelves for tool holders for NC storage in increments of 50 mm
- + User-friendly**
with direct access to tools and small parts from both sides
- + Well protected**
protection from dirt, liquids and physical loads thanks to closed housing with impact-resistant and abrasion-resistant surface



Vertical pull-out cabinets from LISTA provide space-saving storage for tools, supplies and more where space is at a premium. The pull-outs can be used from both sides and can optionally be fitted with perforated panels or shelves to hold plastic containers, tools, documents and LISTA tool holders for NC storage. The result: maximum storage space with a very small footprint. That's what we call efficient.



Art. no. **85.799.010**
Fronts light blue, RAL 5012
(excluding storage containers)

Vertical pull-out cabinets

Depending on the model, all cabinets on this page are equipped with: front covers 3 x W 307 mm, 4 x W 230 mm, pull-outs with a load capacity of 200 kg, perforated panels with square holes 10 x 10 mm, 38 mm apart



Art. no. **85.789.050**
Doors metallic grey, NCS S 6502-B
(excluding tools)

H ↑ 1950 mm **W** → 1000 mm **D** ↗ 695 mm



Specification

Cabinet with front covers for NC storage

3 or 4 pull-outs with 4 adjustable shelves each for LISTA NC tool holder (see p. 102), usable dimensions: W 118 x D 554 mm, accommodation length for NC tool holder = 554 mm

Pull-outs	📦	🔒	Art. no.
3	200	KEY Lock	82.979.XXX
4	200	KEY Lock	82.980.XXX



Cabinet with front covers and adjustable shelves

3 or 4 pull-outs with 4 adjustable shelves each, plain, usable dimensions: W 291/210 x D 584 x H 25 mm

3	200	KEY Lock	85.792.XXX
4	200	KEY Lock	85.799.XXX



Cabinet with front covers and perforated panels

3 or 4 pull-outs with perforated panels, H 1700 x D 612 mm, can be used on both sides

3	200	KEY Lock	85.798.XXX
4	200	KEY Lock	85.791.XXX

H ↑ 1950 mm **W** → 1000 mm **D** ↗ 600 mm



Specification

Cabinet with 2 hinged doors and perforated panels

3 or 4 pull-outs with perforated panels, H 1700 x D 560 mm, can be used on both sides, door fitted with hinges, opening angle 115°

Pull-outs	📦	🔒	Art. no.
3	200	KEY Lock	85.789.XXX
4	200	KEY Lock	85.788.XXX



Adjustable shelves

The adjustable shelves in two available widths provide optimum storage space for stored items.



NC storage

Safe and space-saving storage of tools in the vertical pull-outs in exchangeable frames.



Perforated panels

Pull-out perforated panels enable flexible attachment of stored items thanks to a wide range of hooks.

» For NC tool holders and partitioning schemes see p. 101

» For pegboard hooks, plastic storage containers see p. 162

200 📦 per pull-out

LISTA heavy-duty cabinets are perfect for storing heavy materials on adjustable shelves, pull-out shelves and in drawers. Additionally, all common access protection solutions, from retracting doors and hinged doors to vertical roller shutters, can be used. For greater transparency of stored items, doors can be supplied with viewing windows on request.



- + Utmost stability**
with a housing load capacity of up to 1500 kg
- + High load capacities**
160 kg per adjustable shelf, 200 kg per drawer/
pull-out shelf
- + Outstanding safety features** – with single
drawer blocking mechanism for heavy-duty cabinets with
retracting doors to prevent the cabinet from tipping over
- + User-friendly**
because of the fast access to all stored items –
retracting doors or smooth-running roller shutters with
user-friendly push handle
- + Secure locking**
with retracting doors, hinged doors or roller shutter
and intelligent locking systems like CODE/RFID Lock
- + Well protected**
protection from dirt, liquids and physical loads thanks
to closed housing with impact-resistant and abrasion-
resistant surface
- + Perfectly organised**
with viewing windows made from UV-resistant,
shatterproof acrylic
- + Can be adapted to new storage items at any time**
with the flexible integration and rearrangement of drawers,
pull-out shelves and adjustable shelves in increments of 25 mm
- >> Fully compatible with LISTA drawer cabinets
and drawer storage walls because of the
standardised unit of measure**
see p. 38 and/or 84



Art. no. **59.542.010**
Light blue, RAL 5012

Art. no. **59.543.070**
Ruby red, RAL 3003
(excluding partition material)

Heavy-duty cabinets with retracting doors

The cabinets are equipped with: adjustable shelves, galvanised, 33 mm thick, pull-out shelves and drawers, painted, generally grey, NCS 4502-B. Retracting doors folded from one piece, optionally either in solid sheet steel or with viewing windows. Fitted in hinge brackets, retracting range 90°, projection of doors when opened is 85 mm. Anti-tilting is ensured by the single-drawer blocking system. Available with KEY Lock, CODE Lock or RFID Lock locking systems.

54 × 27 E **H** ↑ **1950 mm** **W** → **1146 mm** **D** ↗ **690 mm**



Drawers Adjustable shelves Pull-out shelves Hinge pins mounted Art. no.

Cabinets with 2 solid sheet retracting doors

-	4	-	160	Hinge bracket	KEY Lock	59.541.XXX
2 × 75 / 1 × 150	2	2	160/200	Hinge bracket	KEY Lock	59.543.XXX

Cabinets with 2 viewing window retracting doors

-	4	-	160	Hinge bracket	KEY Lock	59.540.XXX
2 × 75 / 1 × 150	2	2	160/200	Hinge bracket	KEY Lock	59.542.XXX



Retracting doors

- disappear in the housing when opened in order to give the best possible access (doors only project by 85 mm)
- folded from a single piece
- either made of full sheet steel or equipped with viewing windows
- fitted into hinge brackets, retracting range 90°
- KEY Lock, CODE Lock or RFID Lock locking systems



- fully extendable
- load capacity up to 200 kg



Robust housing

- welded sheet steel construction with integrated support pillar system



i When ordering a cabinet from these two pages with **CODE** or **RFID Lock** locking system, please add the suffix **"C"** or **"F"** to the article number given in the table (e.g. **98.081.XXX.C**).



» For partition material see p. 248

» For LISTA Script labelling system see p. 268



Cabinet systems | preconfigured heavy-duty cabinets



Art. no. **98.091.100**
Signal blue, RAL 5005



Art. no. **98.086.050**
Metallic grey, NCS S 6502-B

Heavy-duty cabinets with hinged doors

The cabinets are equipped with: adjustable shelves, galvanised, 35 mm thick, pull-out shelves and drawers, painted, generally grey, NCS 4502-B. Hinged doors folded from one piece, optionally either in solid sheet steel or with viewing windows. KEY, CODE or RFID Locks available.



54 × 27 E

H ↑ 1950 mm

W → 1100 mm

D ↗ 641 mm



Drawers	Adjustable shelves	Pull-out shelves	160	Hinge pins mounted		Art. no.
-	4	-	160	Pin hinge	KEY Lock	98.081.XXX
1 × 100 / 1 × 150	3	-	160/200	Pin hinge	KEY Lock	98.085.XXX
2 × 100 / 2 × 150	2	1	160/200	Pin hinge	KEY Lock	98.093.XXX

Cabinets with 2 solid sheet hinged doors



Cabinets with 2 viewing window hinged doors

-	4	-	160	Pin hinge	KEY Lock	98.082.XXX
1 × 100 / 1 × 150	3	-	160/200	Pin hinge	KEY Lock	98.086.XXX
2 × 100 / 2 × 150	2	1	160/200	Pin hinge	KEY Lock	98.094.XXX

Hinged doors

- folded from a single piece
- either made of solid sheet steel or equipped with viewing windows
- with pin hinge, opening angle approx. 115°
- Lock with KEY, CODE or RFID Lock

i When ordering a cabinet from these two pages with **CODE** or **RFID Lock**, please add the suffix **"C"** or **"F"**, respectively, to the article number stated in the table (e.g. **98.081.XXX.C**).



Heavy-duty cabinets with roller shutter

The cabinets are equipped with: adjustable shelves, galvanised, 35 mm thick, pull-out shelves and drawers, painted, generally grey, NCS 4502-B. The smooth-running PVC roller shutter stops at any height without locking. Colour: aluminium colours, the colour of the strike plate with KEY Lock locking system is variable.

54 × 27 E

H ↑ 1950 mm

W → 1100 mm

D ↗ 641 mm



Drawers	Adjustable shelves	Pull-out shelves	160	Hinge pins mounted		Art. no.
-	4	-	160	-	KEY Lock	98.083.XXX
2 × 100	4	-	160/200	-	KEY Lock	98.091.XXX

Cabinets with roller shutter



Roller shutter

- especially suitable when space is limited
- stops at any height without the need for catches
- aluminium colours, colour of strike plate variable
- KEY Lock locking system

>> For partition material sets and labelling system see p. 248.





Art. no. **98.096.010**
Pale blue, RAL 5012

Art. no.
59.544.010
59.532.010
Pale blue, RAL 5012

i Tilt protection is ensured by the multiple pull-out lock; only applies to retracting doors.

Drawers

Drawers with different front heights can be incorporated into the same housing in any order. The insides of the drawer walls are all fitted with a slotted grid in units (E) of 17 mm so that each drawer can be partitioned as required. Colour: grey, NCS 4502-B.

Pull-out shelves

For storing heavy individual items and equipment. Perfectly fitting, variable height assembly of 25 x 25 mm in the cabinet housing. The inserted slats enable stored items to be stored and removed flush with the handle. Specification: steel sheet. Colour: grey, NCS 4502-B. Slats are made of shaped sheet steel profile, sendzimir galvanised.

Adjustable shelves, slotted or plain

Adjustable shelves including 4 shelf supports. Adjustable shelf, slotted, **fitting against the rear**. Specification: steel sheet, galvanised. Long sides folded 4 x 90°. Slotted partition; 50 mm. Load capacity: 160 kg.

Dividers for adjustable shelves

Slotted for separating 2 adjustable shelves attached one above the other. The height of the dividers depends on the distance between the adjustable shelves. Specification: steel sheet. Colour: light grey, RAL 7035.

Base

Robust steel tubing construction 40 x 40 mm, closed side panels, incl. fastening material (screw connection between cabinet and base). Optional: base cover to be attached as a cover on the front or rear. Colour: Anthracite grey, RAL 7016.

54 x 27 E	W → × D ↗	1100 x 641	1146 x 690
H ↑ Cabinet height mm		1950	1950
	Clear height (mm)	1790/ 1640	1830
	for design	Hinged doors roller shutter	Retracting doors
		Art. no. 98.096.XXX	Art. no. 59.544.XXX
Housing			
Hinged doors excl. clasp lock			
Solid sheet		62.031.XXX	-
Viewing window		62.032.XXX	-
Retracting doors excl. clasp lock			
Solid sheet		-	59.532.XXX
Viewing window		-	59.535.XXX
+ clasp lock			
Key Lock, separately lockable		49.060.000	49.060.000
CODE Lock		49.085.000	49.085.000
RFID Lock		49.086.000	49.086.000
Roller shutter excl. cylinder lock		98.097.XXX	-
+ push handle cylinder lock		62.062.000	-

H ↑	Usable height mm	Cladding height mm		
Drawers				
75	57.5	49	85.700.080	85.700.080
100	82.5	76	85.701.080	85.701.080
150	132.5	126	85.702.080	85.702.080
200	182.5	176	85.703.080	85.703.080
Usable dimension W x D mm			918 x 459	918 x 459
Load capacity kg			200	200

Pull-out shelf	85.704.080	85.704.080
Usable dimension W x D mm	918 x 459	918 x 459
Height mm	75	75
Load capacity kg	200	200

Adjustable shelf	98.098.000	59.545.000
Usable dimension W x D mm	967 x 549	966 x 500
Height mm	35	33
Load capacity kg	160	160
Model	Plain	Slotted

	Usable height mm	Distance between shelves TE-TE* mm		
Dividers	179	225	-	59.415.000
	329	375	-	59.416.000

* Distance between shelves from top edge to top edge

Base, H 150 mm	97.588.000	59.412.000
Base cover	98.246.000	62.888.000

Clothing lockers from LISTA offer impressive functionality and a wide variety of equipment options.

This makes them suitable for use in a wide range of locations from workshop to sports hall and they also offer secure, flexible and ideal storage in accordance with DIN 4547-2011.



+ Utmost stability
thanks to hinged doors with the pin on the right and with reinforcement pocket for greater protection against burglary (DIN 4547)

+ Sophisticated ventilation
with air vents at the top and bottom of the housing

+ Optimum hygiene
thanks to plain compartment shelves without raised edge to make it easier to clean the compartments thoroughly

+ Practical interior fittings
with hat rack, towel holder and clothes rail with three sliding coat hooks for each compartment

+ Individual equipment options
such as housing with an inclined top, double compartments, benches or ventilation ducts for on-site forced ventilation

+ Secure locking
with KEY Lock locking system, rotary knob safety lock or closing device for padlock (CODE/RFID Lock and other locking systems on request)

+ Protection from dirt and corrosion
with bases or legs that are galvanised in addition to being powder-coated. Protect against corrosion, cover with a base also protects against dirt



Art. no. **94.424.080**
Pigeon grey, NCS S 4502-B

Clothing lockers

1-leaf for 1 lockable compartment

Equipment per compartment

single-leaf solid sheet door, flush-fitting, surface plain or with perforated field for additional ventilation (1 compartment lockable)

1 hat rack

1 clothes rail, with 3 sliding coat hooks

1 towel holder

Compartments width: 300 or 400 mm
Clear height: 1280 mm / 300 mm (hat rack)



without substructure (for bases)



with feet



with base

		300 mm			400 mm	
H → Cabinet width mm		600	900	1200	800	1200
W ↗ 500 mm	Number of compartments	2	3	4	2	3
D ↗	Door specification	Art. no.	Art. no.	Art. no.	Art. no.	Art. no.
1700 mm	KEY Lock plain	94.414.XXX	94.405.XXX	94.417.XXX	94.420.XXX	94.411.XXX
without substructure	KEY Lock perforated	94.531.XXX	94.534.XXX	94.537.XXX	94.543.XXX	94.546.XXX
1800 mm	KEY Lock plain	94.426.XXX	94.429.XXX	94.432.XXX	94.438.XXX	94.441.XXX
with base, 100 mm	KEY Lock perforated	94.552.XXX	94.555.XXX	94.558.XXX	94.564.XXX	94.567.XXX
1850 mm	KEY Lock plain	94.447.XXX	94.450.XXX	94.453.XXX	94.459.XXX	94.462.XXX
with feet, 150 mm	KEY Lock perforated	94.573.XXX	94.576.XXX	94.579.XXX	94.585.XXX	94.588.XXX



Art. no. **94.417.010**
Light blue, RAL 5012



i Battery charging cabinets with clothes lockers can be found on page 210.



Clothing lockers

1-leaf for 2 lockable compartments

Equipment per compartment

single-leaf solid sheet door, flush-fitting, surface plain or with perforated field for additional ventilation (2 compartments lockable)

- 1 hat rack
- 1 clothes rail, with 3 sliding coat hooks
- 1 towel holder

Compartments width: 300 mm
Clear height: 1280 mm / 300 mm (hat rack)



Sophisticated ventilation system

- the air vents located on the top and bottom of the housing ensure permanent circulation of air in the locker
- door models with individual perforation pattern on request

compartment width **300 mm**

H → Cabinet width mm		600		1200	
W ↗ 500 mm	Number of compartments	2		4	
D ↗	Door specification	Art. no.		Art. no.	
1700 mm without substructure	KEY Lock plain	94.302.XXX		94.305.XXX	
	KEY Lock perforated	94.320.XXX		94.323.XXX	
1800 mm with base, 100 mm	KEY Lock plain	94.308.XXX		94.311.XXX	
	KEY Lock perforated	94.326.XXX		94.329.XXX	
1850 mm with feet, 150 mm	KEY Lock plain	94.314.XXX		94.317.XXX	
	KEY Lock perforated	94.332.XXX		94.335.XXX	



Air duct

Elimination of odours thanks to high air exchange rate and improved drying through on-site forced ventilation.

Air duct on request.

Clothing lockers

2-leaf for 2 lockable compartments

Equipment per compartment

2 solid leaf door, flush fitting, surface plain or with perforated field for additional ventilation (2 compartments lockable)

- 1 hat rack
- 1 clothes rail, with 3 sliding coat hooks
- 1 towel holder

Compartments width: 300 or 400 mm
Clear height: 1280 mm / 300 mm (hat rack)



Inclined top

Clothes lockers with an inclined top prevent undesired use of the cabinet top as shelf space.

Inclined top on request.

compartment width **300 mm** **400 mm**

H → Cabinet width mm		600		1200		800	
W ↗ 500 mm	Number of compartments	2		4		2	
D ↗	Door specification	Art. no.		Art. no.		Art. no.	
1700 mm without substructure	KEY Lock plain	94.342.XXX		94.348.XXX		94.345.XXX	
	KEY Lock perforated	94.369.XXX		94.375.XXX		94.372.XXX	
1800 mm with base, 100 mm	KEY Lock plain	94.351.XXX		94.357.XXX		94.354.XXX	
	KEY Lock perforated	94.378.XXX		94.384.XXX		94.381.XXX	
1850 mm with feet, 150 mm	KEY Lock plain	94.360.XXX		94.366.XXX		94.363.XXX	
	KEY Lock perforated	94.387.XXX		94.393.XXX		94.390.XXX	



Wide range of accessories

On request, you may also order benches, shoe racks, name and number plates, towel holders and more.



Versatile locking systems

cylinder locks, numeric combination locks, coin deposit locks, locking systems for padlocks and master key systems are available. Other locks available on request.

i When ordering a clothes locker from this double page with **closing device for padlock**, please specify the suffix "V", or, for **rotary knob safety lock**, use the suffix "D" in addition to the article number from the table (e.g. 94.429.XXX.V)



Base makes cleaning simpler

The closed base border on the floor makes it easy to clean changing room areas.

Cabinet systems | Dual-level clothing lockers



Art. No. **94.424.080**
Pigeon grey, NCS S 4502-B

Dual-level clothing lockers

equipment for each compartment
single-leaf solid sheet door, flush-fitting, surface plain or with perforated field for additional ventilation (1 compartment lockable)
1 hat rack
1 clothes rail, with 3 sliding coat hooks
1 towel holder

Compartments width: 300 or 400 mm
Clear height: 1280 mm (for top and bottom compartment)



without substructure (for bases)



with feet



with base

		300 mm			400 mm	
H → Cabinet width mm	compartment width	600	900	1200	800	1200
W ↗ 500 mm	Number of compartments	2 × 2	3 × 2	4 × 2	2 × 2	3 × 2
D ↑	Door specification	Art. no.	Art. no.	Art. no.	Art. no.	Art. no.
1700 mm	KEY Lock plain	94.468.XXX	94.471.XXX	94.474.XXX	94.480.XXX	94.483.XXX
without substructure	KEY Lock perforated	94.594.XXX	94.597.XXX	94.600.XXX	94.606.XXX	94.609.XXX
1800 mm	KEY Lock plain	94.489.XXX	94.492.XXX	94.495.XXX	94.501.XXX	94.504.XXX
with base, 100 mm	KEY Lock perforated	94.615.XXX	94.618.XXX	94.621.XXX	94.627.XXX	94.630.XXX
1850 mm	KEY Lock plain	94.510.XXX	94.513.XXX	94.516.XXX	94.522.XXX	94.525.XXX
with feet, 150 mm	KEY Lock perforated	94.636.XXX	94.639.XXX	94.642.XXX	94.648.XXX	94.651.XXX



H → Cabinet width mm	600	800	900	1200
-----------------------------	------------	------------	------------	-------------

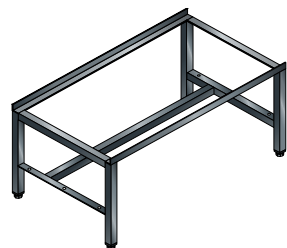


Single- or double-sided base, height 150 mm

Welded steel construction with angle profiles and adjustable plastic legs for levelling. Colour: Anthracite grey, RAL 7016.
Note: double-sided (for 2 cabinets, back to back)

Base, H 150 mm

W mm	Model	Art. no.	Art. no.	Art. no.	Art. no.
500	single-sided	94.252.000	94.253.000	94.254.000	94.255.000
1000	double-sided	94.264.000	94.265.000	94.266.000	94.267.000

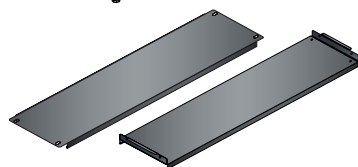


Single-sided or double-sided base, height 400 mm

Welded steel construction with angle profiles and adjustable plastic legs for levelling. Colour: Anthracite grey, RAL 7016.
Note: double-sided (for 2 cabinets, back to back)

Base, H 400 mm

W mm	Model	Art. no.	Art. no.	Art. no.	Art. no.
500	single-sided	97.110.000	97.473.000	97.143.000	97.111.000
1000	double-sided	97.108.000	98.444.000	97.870.000	97.109.000



Shoe rack

W mm	Model	Art. no.	Art. no.	Art. no.	Art. no.
230	secure	97.156.000	97.472.000	97.144.000	97.157.000
230	folds upward	98.230.000	98.683.000	98.617.000	98.231.000



Single-sided or double-sided base, height 400 mm

Welded steel construction with angle profiles and adjustable plastic legs for levelling. Colour: Anthracite grey, RAL 7016.
Note: double-sided (for 2 cabinets, back to back). Bench depth: 300 mm.

Base, H 400 mm

W mm	Model	Art. no.	Art. no.	Art. no.	Art. no.
500	single-sided	94.946.000	94.947.000	94.948.000	94.949.000
1000	double-sided	94.950.000	94.951.000	94.952.000	94.953.000



Fixed or fold-up shoe rack

Can be attached to the bases using attachment brackets without screws. Number required: 1 per clothes locker. Colour: Attachment brackets anthracite grey, RAL 7016; shoe racks galvanised anthracite grey, RAL 7016. Bench depth: 300 mm.

Shoe rack

W mm	Model	Art. no.	Art. no.	Art. no.	Art. no.
230	secure	94.954.000	94.955.000	94.956.000	94.957.000
	Distance between stands mm	310	510	610	910
	Shelf length mm	336	536	636	936
230	folds upward	94.966.000	94.967.000	94.968.000	94.696.000
	Distance between stands mm	310	510	610	910
	Shelf length mm	285	485	585	885



Bench base for in-line installation on request

Upon presentation of a layout plan, the bases are available at **little cost** for single- and/or double-sided construction in a row. In addition, less cleaning is required thanks the small number of leg supports.



Double-sided base, height 400 mm with shoe racks

LISTA compartment cabinets are ideal for storing personal items of all kinds. Whether in industry, trades, office and administration, or leisure and sport: a variety of locking systems makes the cabinets easily adaptable to the respective security requirements of any location.

+ Utmost stability
thanks to hinged doors with the pin on the right, rolled on all sides, with curved surface

+ Sophisticated ventilation
with air vents at the top and bottom of the door

+ Secure locking
with KEY Lock locking system or locking mechanism for padlock (CODE/RFID Lock and other locking systems on request)

+ Clearly labelled
thanks to embossed label frame

+ Protection from dirt
thanks to substructure with base to prevent dirt from accumulating under the locker



Art. no. **11.527.050**
Metallic grey, NCS S 6502-B



Art. no. **11.529.010**
Light blue, RAL 5012



Compartment doors

Different compartment doors, e.g. with viewing windows or mail slot, on request



Inclined top part

An inclined top part prevents the cover from being used inadvertently as shelf space and reduces required cleaning.

Ventilation slots and label frames

The high-quality solid sheet doors provide very high stability and are also equipped with a label frame. Air vents at the top and bottom provide ideal ventilation.



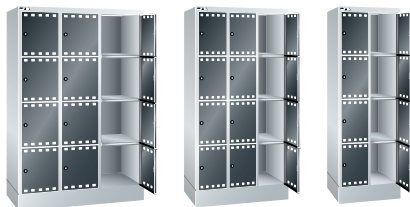
Versatile locking systems

cylinder locks, numeric combination locks, coin deposit locks, locking systems for padlocks and master key systems are available. Other locking devices such as CODE/RFID Lock on request.

i Ordering information



When ordering a compartment cabinet with **closing device for a padlock**, please specify the suffix **"V"** or, for a **rotary knob safety lock**, the suffix **"D"** in addition to the article number from the table (e.g. **11.525.XXX.V**).



		Compartment width			400 mm		
		300 mm			400 mm		
		Clear compartment width			340 mm		
D ↗ 500 mm	W → Cabinet width mm	610	905	1200	415	810	1205
H ↑	H ↑	Number of compartments ↔					
with base H 150 mm	Clear compart- ment height	2	3	4	1	2	3
	Number of compart- ments	Art. no.	Art. no.	Art. no.	Art. no.	Art. no.	Art. no.
1095 mm	300 mm 280 mm	3	KEY Lock	-	11.513.XXX	-	-
1395 mm	300 mm 280 mm	4	KEY Lock	11.507.XXX	11.515.XXX	-	-
1695 mm	300 mm 280 mm	5	KEY Lock	11.509.XXX	11.517.XXX	11.521.XXX	-
1795 mm	400 mm 380 mm	4	KEY Lock	11.501.XXX	11.503.XXX	11.505.XXX	11.525.XXX 11.527.XXX 11.529.XXX
1995 mm	300 mm 280 mm	6	KEY Lock	11.511.XXX	11.519.XXX	11.523.XXX	-
inclined top part, H 50/200 mm		97.315.000	97.316.000	97.317.000	97.318.000	97.319.000	97.320.000
for mounting superstructures at the factory		97.558.000	97.558.000	97.558.000	97.558.000	97.558.000	97.558.000

COLOURS: With preconfigured cabinets housing in light grey, RAL 7035.



LISTA battery charging cabinets with hinged doors are perfect for the centralised supply of batteries and electrical devices. All cabinets can be configured individually and adapted to your specific storage needs through the flexible use of partition materials, cabinet accessories and power supply by means of power strips.

+ Flexible range of applications
Charging options for battery-operated electrical machines, BDE devices, notebooks, tablets and smartphones

+ Perfect cable management
Cable openings for protected and orderly cable routing

+ Outstanding safety features
CE compliant

+ Secure locking
Devices are locked away at all times, and are protected against unauthorised use and with intelligent locking systems such as CODE/RFID Lock.

>> Benefits of LISTA cabinet systems
See p. 168

Battery charging cabinets with hinged doors

Depending on the model, the cabinets are equipped with **adjustable shelves**, galvanised, 30 mm thick, load capacity 60 kg. Painted **drawers**, anthracite gray (RAL 7016), load capacity 50 kg. **Power strips** with on/off switches and 4 or 5 sockets, 230 V.



Art. No. **62.955.020**
Solid sheet hinged door,
light grey (RAL 7035)

Art. No. **62.976.020**
Viewing window hinged door,
light grey (RAL 7035)

Art. No. **62.959.020**
Solid sheet hinged door,
light grey (RAL 7035)



Hinged doors with viewing windows

- For greater transparency of stored items
- Encourages order

i When ordering a cabinet from these two pages with **CODE** or **RFID Lock**, please add the suffix **"C"** or **"F"**, respectively, to the article number stated in the table (e.g. **62.955.XXX.C**).



W → 1000 mm	D ↗ 580 mm	H ↑ 1950 mm	Solid sheet doors	Viewing windows
--------------------	-------------------	--------------------	-------------------	-----------------

Number of power strips	Mounting position, power strips	Adjustable shelves	Drawers	kg	Door storage		Art. No.	Art. No.
Model D / Schuko								
1 × 5-socket (230V)	On side panel	4	–	60	Hinge	KEY Lock	62.954.XXX	62.972.XXX
2 × 5-socket (230V)	On side panel	4	–	60	Hinge	KEY Lock	62.955.XXX	62.973.XXX
1 × 5-socket (230V)	On rear panel/power conduit	4	–	60	Hinge	KEY Lock	62.956.XXX	62.974.XXX
2 × 5-socket (230V)	On rear panel/power conduit	4	–	60	Hinge	KEY Lock	62.957.XXX	62.975.XXX
2 × 5-socket (230V)	On rear panel/power conduit	3	2 × 95	60/50	Hinge	KEY Lock	62.959.XXX	62.977.XXX
2 × 5-socket (230V), RCD/MCB**	On rear panel/power conduit	4	–	60	Hinge	KEY Lock	62.958.XXX	62.976.XXX
Model CH								
1 × 4-socket (230V)*	On side panel	4	–	60	Hinge	KEY Lock	62.966.XXX	62.984.XXX
2 × 4-socket (230V)*	On side panel	4	–	60	Hinge	KEY Lock	62.967.XXX	62.985.XXX
1 × 4-socket (230V)*	On rear panel/power conduit	4	–	60	Hinge	KEY Lock	62.968.XXX	62.986.XXX
2 × 4-socket (230V)*	On rear panel/power conduit	4	–	60	Hinge	KEY Lock	62.969.XXX	62.987.XXX
2 × 4-socket (230V)*	On rear panel/power conduit	3	2 × 95	60/50	Hinge	KEY Lock	62.971.XXX	62.989.XXX
2 × 4-socket (230V)*, RCD/MCB**	On rear panel/power conduit	4	–	60	Hinge	KEY Lock	62.970.XXX	62.988.XXX
Model F								
1 × 5-socket (230V)	On side panel	4	–	60	Hinge	KEY Lock	62.960.XXX	62.978.XXX
2 × 5-socket (230V)	On side panel	4	–	60	Hinge	KEY Lock	62.961.XXX	62.979.XXX
1 × 5-socket (230V)	On rear panel/power conduit	4	–	60	Hinge	KEY Lock	62.962.XXX	62.980.XXX
2 × 5-socket (230V)	On rear panel/power conduit	4	–	60	Hinge	KEY Lock	62.963.XXX	62.981.XXX
2 × 5-socket (230V)	On rear panel/power conduit	3	2 × 95	60/50	Hinge	KEY Lock	62.965.XXX	62.983.XXX
2 × 5-socket (230V), RCD/MCB**	On rear panel/power conduit	4	–	60	Hinge	KEY Lock	62.964.XXX	62.982.XXX
Model GB								
1 × 5-socket (230V)	On side panel	4	–	60	Hinge	KEY Lock	57.145.XXX	57.151.XXX
2 × 5-socket (230V)	On side panel	4	–	60	Hinge	KEY Lock	57.146.XXX	57.152.XXX
1 × 5-socket (230V)	On rear panel/power conduit	4	–	60	Hinge	KEY Lock	57.147.XXX	57.153.XXX
2 × 5-socket (230V)	On rear panel/power conduit	4	–	60	Hinge	KEY Lock	57.148.XXX	57.154.XXX
2 × 5-socket (230V)	On rear panel/power conduit	3	2 × 95	60/50	Hinge	KEY Lock	57.150.XXX	57.156.XXX
2 × 5-socket (230V), RCD/MCB**	On rear panel/power conduit	4	–	60	Hinge	KEY Lock	57.149.XXX	57.155.XXX

* With 1 × thermal fuse

** RCD = residual current protective device (16A/30 mA), MCB = miniature circuit breaker (CH = 10A, D/F = 16A)

50 drawers/pull-out shelves
 60 adjustable shelves

Cabinet systems | Battery charging cabinets with hinged doors

W → Cabinet width mm

750

1000

1250



Cabinet housing

incl. rubber grommets for protected cable feed through perforated rear panel in housing (punch-out) for optional fan installation.

D →	H ↑	Door storage	Art. No. 🌈	Art. No. 🌈	Art. No. 🌈
500 mm	1000 mm	Hinge	-	62.779.XXX	-
500 mm	1950 mm	Hinge	62.792.XXX	62.780.XXX	62.794.XXX
580 mm	1000 mm	Hinge	-	62.777.XXX	-
580 mm	1950 mm	Hinge	62.793.XXX	62.778.XXX	62.795.XXX



Hinged doors

2 doors excl. clasp lock (must be ordered separately)

	H ↑	Door storage	Art. No. 🌈	Art. No. 🌈	Art. No. 🌈
Solid sheet	1000 mm	Hinge	-	62.009.XXX	-
Solid sheet	1950 mm	Hinge	62.006.XXX	62.011.XXX	62.016.XXX
Viewing window	1000 mm	Hinge	-	62.137.XXX	-
Viewing window	1950 mm	Hinge	-	62.012.XXX	62.017.XXX

Adjustable shelf

Incl. 4 shelf supports. Specification: sheet steel, galvanised, slotted. Long sides folded by 4 × 90°. 30 mm thick with load-bearing capacity of 60 or 100 kg.

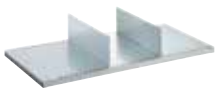
D →	For cabinet depth	kg	Art. No.	Art. No.	Art. No.
500 mm		60	58.104.000	58.107.000	58.110.000
500 mm		100	-	60.407.000	60.408.000
580 mm		60	58.105.000	58.108.000	58.111.000
580 mm		100	-	60.409.000	60.434.000
Usable dimensions (W × D mm)			730 × 425/506	980 × 425/506	1230 × 425/506



Divider for adjustable shelf

For partitioning adjustable shelves. Specification: sheet steel, painted. Colour: light grey, RAL 7035.

D →	For cabinet depth	Art. No.	Art. No.	Art. No.
500 mm	W 411 × H 150 mm	58.145.000	58.145.000	58.145.000
580 mm	W 490 × H 150 mm	58.146.000	58.146.000	58.146.000



Drawers and pull-out shelves

Full extension with ball bearings, including guide rails. Load capacity 50 kg. Specification: sheet steel. Colour: anthracite gray, RAL 7016. Only compatible with cabinets with hinge bearing assembly and a depth of 580 mm.

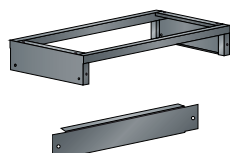
	Art. No.	Art. No.	Art. No.
Drawer, FH 95 mm	62.308.000	58.113.000	57.481.000
580 mm Usable dimensions (W × D × H mm)	617 × 459 × 72	867 × 459 × 72	1117 × 459 × 72
Drawer, FH 145 mm	-	57.471.000	57.482.000
580 mm Usable dimensions (W × D × H mm)	-	867 × 459 × 122	1117 × 459 × 122
Pull-out shelf, FH 53 mm	-	58.115.000	-
580 mm Usable dimensions (W × D × H mm)	-	867 × 459 × 43	-



Base

Robust steel tubing construction 40 × 40 mm, closed side panels. Includes fastening material (screw connection between cabinet and base). Optional: base cover to be attached as a cover on the front or rear. Colour: Anthracite grey, RAL 7016.

	Art. No.	Art. No.	Art. No.
Base*, FH 150 mm			
500 mm	97.844.000	98.518.000	98.253.000
580 mm	98.657.000	98.216.000	97.835.000
Base cover, H 150 mm	57.238.000	97.986.000	62.806.000



Punch out

perforated rear housing panel for optional installation of a fan



Hinged bearing assembly

- For the installation of drawers and pull-out shelves, doors must be fitted with hinged bearing assembly
- Doors are flush with the cabinet housing
- Opening angle approx. 115°



KEY Lock

Art. No. 49.060.000
Separately lockable



CODE Lock

Art. No. 49.085.000



RFID Lock

Art. No. 49.086.000

Power strips

With on/off switch and sockets, 230 V, without power and connection cables

For cabinet depth	Type	Description	Art. No.
500 mm	D / PE	4-socket (230V)	82.474.000
500 mm	CH	3-socket (230V)*	82.475.000
500 mm	F	4-socket (230V)	82.476.000
500 mm	GB	4-socket (230V)	62.902.000
580 mm	D / PE	5-socket (230V)	62.763.000
580 mm	CH	4-socket (230V)*	62.782.000
580 mm	F	5-socket (230V)	62.739.000
580 mm	GB	5-socket (230V)	62.903.000

* Incl. thermal fuse 10 A



Side panel installation

Fastening kit for power strips

Side panel installation

Includes fastening material for screw connection of the power strips onto the cabinet side panel

For cabinet depth	Art. No.
500 mm	62.771.000
580 mm	62.772.000

Rear panel installation

Power conduit for holding the power strips (4-socket for CH and 5-socket for D, F and GB). Fastening material included. Specification: sheet steel. Colour: anthracite gray, RAL 7016.

For cabinet width	Art. No.
1000 mm	62.992.000
1250 mm	62.996.000



Rear panel installation



Cable fastening

Cable tie and mounting base kit for 2 m cable length

Quantity	Art. No.
5 pieces	390.024.000

Fan

Incl. adapter with integrated European plug
For GB, an adapter is required, art. no. **61.160.000**.

Type	Art. No.
12V DC 106	57.467.000



RCD/MCB

RCD = residual current protective device (16 A)
MCB = miniature circuit breaker (CH = 10 A, D/F = 16 A)

Quantity	Art. No.
1 piece	57.101.000

i Intermediate coupling required to connect RCD to power strip, art. no. **89.552.000**.



System socket supply cable

Simple and quick electrical installation through plug and socket connector system, 3-pin.

Type	Length (m)	Art. No.
D / PE	3.0	89.545.000
CH	3.0	89.544.000
F	3.0	89.545.000
GB	3.0	89.546.000



Connecting cable

3-pin connector system with plug and socket

Length (m)	Art. No.
1.0	89.548.000
1.5	390.036.000
2.0	89.549.000
3.0	89.550.000

LED cabinet lighting

12 V LED lighting for cabinet height 1950 mm. Installed at the front right of the cabinet. Consisting of 1 LED light each, length: 800 mm (9W) and 500 mm (5W), integrated motion detector requires 1 free slot in one power strip.

Art. No. **57.463.000**



+ Flexible range of applications

Charging options for battery-operated electrical machines, BDE devices, notebooks, tablets, smartphones or e-bikes

+ Sophisticated ventilation

Optimal air circulation thanks to ventilation holes at the front and back

+ Great design diversity

With sockets, network sockets RJ45 and USB interfaces

+ Outstanding safety features

CE compliant

+ Secure locking

Devices are locked away at all times, and are protected against unauthorised use and with intelligent locking systems such as CODE/RFID Lock

>> Benefits of LISTA cabinet systems

See p. 168

LISTA compartment cabinets with power connection are perfect for personal storage of battery-operated devices of all kinds. Suitable for use in industry, trade, offices, schools, universities or public buildings. Batteries can be charged during storage thanks to the built-in double sockets, and are therefore always ready to use.



Art. no. **98.409.020**
Light grey, RAL 7035



Art. no. **98.416.070**
Ruby red, RAL 3003







Versatile locking systems

• Cylinder locks, numeric combination locks, coin deposit locks, locking systems for padlocks and master key systems are available

i When ordering a cabinet from this page with **RFID Lock**, please add the suffix "F", respectively, to the article number stated in the table (e.g. **98.409.XXX.F**).




H  **1795 mm, with base 150 mm high**

		No. of compartments	Shelf dimension (W×H mm)	Type	Module per compartment	Art. no. 
---	---	---------------------	--------------------------	------	------------------------	--

Cabinets with 8 compartments and KEY Lock

810 mm	585 mm	2 × 4	400 × 400	D / PE	2 × 230V	98.409.XXX
810 mm	585 mm	2 × 4	400 × 400	D / PE	1 × 230V, 2 × USB	98.415.XXX
810 mm	585 mm	2 × 4	400 × 400	D / PE	1 × 230V, 1 × RJ45	98.419.XXX
810 mm	585 mm	2 × 4	400 × 400	CH	2 × 230V	98.411.XXX
810 mm	585 mm	2 × 4	400 × 400	CH	1 × 230V, 2 × USB	98.629.XXX
810 mm	585 mm	2 × 4	400 × 400	CH	1 × 230V, 1 × RJ45	98.631.XXX
810 mm	585 mm	2 × 4	400 × 400	F	2 × 230V	98.413.XXX
810 mm	585 mm	2 × 4	400 × 400	F	1 × 230V, 2 × USB	98.417.XXX
810 mm	585 mm	2 × 4	400 × 400	F	1 × 230V, 1 × RJ45	98.421.XXX
810 mm	585 mm	2 × 4	400 × 400	GB	2 × 230V	98.455.XXX
810 mm	585 mm	2 × 4	400 × 400	GB	1 × 230V, 2 × USB	98.457.XXX
810 mm	585 mm	2 × 4	400 × 400	GB	1 × 230V, 1 × RJ45	98.459.XXX

Cabinets with 12 compartments and KEY Lock

1205 mm	585 mm	3 × 4	400 × 400	D / PE	2 × 230V	98.410.XXX
1205 mm	585 mm	3 × 4	400 × 400	D / PE	1 × 230V, 2 × USB	98.416.XXX
1205 mm	585 mm	3 × 4	400 × 400	D / PE	1 × 230V, 1 × RJ45	98.420.XXX
1205 mm	585 mm	3 × 4	400 × 400	CH	2 × 230V	98.412.XXX
1205 mm	585 mm	3 × 4	400 × 400	CH	1 × 230V, 2 × USB	98.630.XXX
1205 mm	585 mm	3 × 4	400 × 400	CH	1 × 230V, 1 × RJ45	98.632.XXX
1205 mm	585 mm	3 × 4	400 × 400	F	2 × 230V	98.414.XXX
1205 mm	585 mm	3 × 4	400 × 400	F	1 × 230V, 2 × USB	98.418.XXX
1205 mm	585 mm	3 × 4	400 × 400	F	1 × 230V, 1 × RJ45	98.422.XXX
1205 mm	585 mm	3 × 4	400 × 400	GB	2 × 230V	98.456.XXX
1205 mm	585 mm	3 × 4	400 × 400	GB	1 × 230V, 2 × USB	98.458.XXX
1205 mm	585 mm	3 × 4	400 × 400	GB	1 × 230V, 1 × RJ45	98.460.XXX



2 × socket, 230V



Socket 230V/RJ45, without network cable, Plug+Play, Cat6



Socket 230V/Power USB

>> For power modules, see. p. 145

i **On request**
Doors with viewing windows



LISTA clothes lockers and laptop cabinets with power outlets are perfect for personal storage of battery-powered devices of all kinds, whether in industry, trade, offices, schools, universities or public buildings. Batteries can be charged during storage thanks to the built-in sockets and are therefore always ready to use.

- + Utmost stability**
thanks to hinged doors with the pin on the right and with reinforcement pocket for greater protection against burglary (DIN 4547)
- + Sophisticated ventilation**
with air vents at the top and bottom of the housing
- + Optimum hygiene**
thanks to plain compartment shelves without raised edge to make it easier to clean the compartments thoroughly
- + Practical interior fittings**
with hat rack, towel holder and clothes rail with three sliding coat hooks for each compartment
- + Secure locking option**
with KEY Lock locking system (CODE/RFID Lock and other locking systems on request)
- + Protection against corrosion**
with base that is galvanised in addition to being powder-coated
- + Flexible range of applications**
with charging options for battery-operated BDE devices, laptops, tablets or smartphones
- + Battery charging cabinet for electric scooters**
with additional ramp in front of the base
- + Outstanding safety features**
CE compliant

Art. no. **98.160.010**
Pale blue, RAL 5012



Art. no. **98.166.010**
Pale blue, RAL 5012

Clothes lockers

The clothes lockers are equipped with the following for each compartment: Single-leaf solid sheet door, flush-fitting, smooth surface (1 compartment lockable), 1 hat shelf, 1 clothes rack with 3 sliding coat hooks, 1 towel holder, 2 × 230 V sockets.



H → Cabinet width mm

W ↗ 500 mm

D ↑

1800 mm
with base, 100 mm

compartment width

300 mm

600

900

Number of compartments

2

3

Door specification

plain

plain

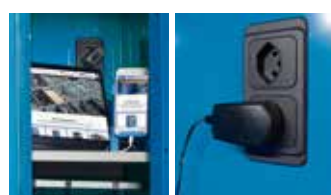
Model	Modules per compartment	Lock	Art. no.	Art. no.
D/Schuko	2 × 230V	KEY Lock	98.156.XXX	98.158.XXX
CH	2 × 230V	KEY Lock	98.155.XXX	98.157.XXX
F	2 × 230V	KEY Lock	98.161.XXX	98.159.XXX
GB	2 × 230V	KEY Lock	98.162.XXX	98.160.XXX

E-scooter cabinets

The e-scooter cabinets are equipped with the following for each compartment: single-leaf solid sheet door, flush-fitting, perforated field for additional ventilation (1 compartment lockable), 1 hat shelf, 1 clothes rack with 3 sliding coat hooks, 1 velcro holder, 2 × 230 V sockets.



H mm	W mm	D mm	Model	Number of compartments × compartment width (mm)	Modules per compartment	Lock	Art. no.
1000	500	1700	D/Schuko	2 × 500	2 × 230V	KEY Lock	98.166.XXX
1000	500	1700	CH	2 × 500	2 × 230V	KEY Lock	98.167.XXX
1000	500	1700	F	2 × 500	2 × 230V	KEY Lock	98.168.XXX
1000	500	1700	GB	2 × 500	2 × 230V	KEY Lock	98.169.XXX



Power modules for clothes lockers and e-scooter cabinets



Connecting cable



Clothes rack




Hook and loop fastener for e-scooter cabinet



Level, horizontally configured compartments make the LISTA laptop cabinet the optimal storage solution for notebooks and similar devices.

They also feature a particularly effective space-saving design and can be equipped with various power modules and locking solutions to tailor them more flexibly to your requirements.

- 
- + Flexible range of applications**
with charging options for laptops, tablets and smart-phones
 - + Sophisticated ventilation**
optimal air circulation via rear air vents
 - + Secure locking option**
Devices are locked away at all times and are protected against unauthorised use with intelligent locking systems such as CODE/RFID locks.
 - + Protects against dirt**
thanks to substructure with base to prevent dirt from accumulating under the cabinet
 - + Outstanding safety features**
CE compliant



Art. no. **98.416.070**
Ruby red, RAL 3003

mm	mm	mm	No. of compartments	Shelf dimension (W x H mm)	Type	Module per compartment	Art. no.
Laptop cabinets with 10 compartments and cylinder lock							
415	500	1790	1 x 10	330 x 140	D / PE	1 x 230V	98.600.XXX
415	500	1790	1 x 10	330 x 140	D / PE	2 x 230V	98.582.XXX
415	500	1790	1 x 10	330 x 140	CH	1 x 230V	98.597.XXX
415	500	1790	1 x 10	330 x 140	CH	2 x 230V	98.583.XXX
415	500	1790	1 x 10	330 x 140	F	1 x 230V	98.598.XXX
415	500	1790	1 x 10	330 x 140	F	2 x 230V	98.584.XXX
415	500	1790	1 x 10	330 x 140	GB	1 x 230V	98.599.XXX
415	500	1790	1 x 10	330 x 140	GB	2 x 230V	98.585.XXX



Power modules for laptop cabinet

Socket strip can be ordered with one or two 230V sockets per compartment.



USB adapter for sockets

1 x USB-C connection, 3 x USB-A connection
Overcharge, deep discharge, overload and short-circuit protection Colour: Black

Art. no. **61.257.000**



When ordering a laptop cabinet on this page with **CODE/RFID Lock**, please specify the suffix **"F"** in addition to the article number from the table (e.g. **98.600.XXX.F**)



Thanks to its high resistance to light and weathering, the LISTA e-bike charging station is ideally suited for the central supply of batteries for outdoor use. Each compartment has a power module with two fused sockets. In addition to business and public authorities, schools, universities, airports, restaurants, cafés, hotels and other public buildings can also be equipped with the e-bike charging station for outdoor use.

+ Utmost stability and convenience

thanks to welded sheet steel housing made of electrolytically galvanised sheet steel and double-walled doors with opening limiter and self-closing function

+ Well protected

thanks to high-quality polyester resin powder coating with high light and weather resistance, cabinet housing and electrical components protected against splashes (IP44 in accordance with DIN EN 60529), inclined top with front projection as rain protection

+ Perfect cable management

thanks to 230V socket with cover, FI/LS switch for each compartment, power supply via ground cable, access in base in spray water-protected distribution box (IP65), roof and left side panel removable as inspection opening (screwed), inspection opening in lower compartment incl. distributor box in base area

+ Sophisticated ventilation

thanks to integrated heat ventilation conduit and passive ventilation in each compartment

+ Outstanding safety features

CE compliant

+ Secure locking option

with security cylinder lock, coin deposit lock or cashier lock (other locking systems available on request)





Art. no. **61.200.495**
Pale grey, RAL 7035

Art. no. **61.217.498**
Pale grey, RAL 7035
Pale blue, RAL 5012

Art. no. **61.218.499**
Pale grey, RAL 7035
Metallic grey, NCS S 6502-B



Socket outlet
230V/16A with cover,
FI/LS switch per compartment

W → 600 mm **D** ↗ 500 mm **H** ↑ 2059/2000 mm, with 200 mm base

Number of compartments	Shelf dimension (W × H mm)	🔒	Art. no. D/PE	Art. no. CH	Art. no. F	Art. no. GB
------------------------	----------------------------	---	---------------	-------------	------------	-------------

Battery charging cabinet as e-bike charging station

1 × 4	370 × 370	Cylinder lock	61.200.XXX	61.217.XXX	61.218.XXX	on request
		Coin deposit lock	61.219.XXX	61.220.XXX	61.221.XXX	on request
		Cashier lock	61.222.XXX	61.223.XXX	61.224.XXX	on request

Accessories for coin deposit lock and cashier lock

Armband , nylon, colour: blue	sales unit	10 items	Art. no.	97.608.000
Numbered set no. variable		50 tiles		11.696.000
Promax removal key , new system		1 key		96.340.000
Cash box key for cashier lock for emptying coin collecting box		1 key		98.179.000



Cylinder lock
with 3 keys and key security card



Coin deposit lock
with door plate (without IP × 4 protection)

i Choice of colour

The LISTA battery-charging cabinet for outdoor use is available in the following three colours (high-quality polyester resin powder paint). When ordering, please use the desired three-digit colour code (instead of XXX).



.495 Pale grey
RAL 7035

.498 Pale grey
RAL 7035
Pale blue
RAL 5012

.499 Pale grey
RAL 7035
Metallic grey
NCS S 6502-B

➤ Please contact us for more information



Cashier lock
mechanical (without IP × 4 protection)

LISTA environmental and oil cabinets are suitable for the safe and standard storage of water-hazardous substances in water hazard class (WGK) 1–3. Liquids that are required in the daily work flow are stored safely in LISTA oil cabinets. Pull-out shelves hold the liquid canisters. Drops of liquid are collected in the drip tray.



- + Maximum stability**
with housing load capacity of up to 500 kg
- + High load capacities**
Drip trays with a load capacity of up to 100 kg and canister shelves up to 200 kg
- + Can be adapted to new storage items at any time**
by inserting or converting drip trays and canister shelves in 25-mm increments as required
- + Individual equipment options**
with drip trays, canister shelves, base trays, canisters and drawers
- + Safe and orderly storage**
with drip trays welded to form a liquid-tight seal according to Section 19 of the Water Resources Act/German directive on steel trays (StawaR).
- + Secure locking**
with solid-sheet doors (flush-fitting, folded from one piece) and selectable locking systems
- + Sophisticated ventilation**
with perforated field at the top and bottom of environmental lockers



Oil cabinet
Art. no. **71.461.010**
Light blue, RAL 5012



Environmental cabinet
Art. no. **60.474.030**
Reseda green, RAL 6011

Oil cabinets

The cabinets are fitted with: chromium steel drip trays, 2 mm thick, welded to form a liquid-tight seal according to Section 19 of the Water Resources Act/German directive on steel trays (StawaR), 40-litre capacity, canister shelves (painted grey), NCS 4502-B, canister made of HDPE plastic with outlet valve (glossy chrome finish). Solid-sheet hinged doors folded from one piece, with fulcrum pins, 235-degree opening angle.

W → 717 mm **D** ↗ 753 mm **H** ↑ 1450 mm



Cabinets with 2 solid sheet doors

Equipment	kg	Door storage	Lock	Art.no.
2 canister shelves 8 canisters, 25 l each 1 drip tray Tank dimensions: 651×620×100 mm (W×D×H)	200	Fulcrum pin	KEY Lock	71.460.XXX
3 canister shelves 10 canisters, 10 l each 4 canisters, 25 l each 1 drip tray Tank dimensions: 651×620×100 mm (W×D×H)	200	Fulcrum pin	KEY Lock	71.461.XXX



i Canister with outlet tap

Fitted with screw cap. Filter in the filler neck. Outlet tap, glossy chrome finish with seal. Specification: HDPE plastic, transparent.

Width	Depth	Height	Volumetric capacity	Art.no.
120 mm	440 mm	270 mm	10 l	14.990.000
150 mm	440 mm	490 mm	25 l	14.991.000

Environmental cabinets

The cabinets are fitted with: galvanised drip trays, 3 mm thick, welded to form a liquid-tight seal according to Section 19 of the Water Resources Act/German directive on steel trays (StawaR), 20-litre capacity. Solid-sheet hinged doors folded from one piece, with hinges, 115-degree opening angle.

W → 1000 mm **D** ↗ 500 mm **H** ↑ 1950 mm



Cabinet with 2 solid sheet doors

Equipment	kg	Door storage	Lock	Art.no.
4 drip trays Tank dimensions: 982×445×70 mm (W×D×H)	100	Hinge	KEY Lock	60.474.XXX



Observe legal regulations and directives

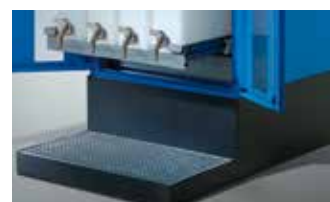
The canisters may only be filled with acid- and lye-free liquids (no abrasive media), oils and grease with a flame point above 55° Celsius. Maximum ambient temperature 40° Celsius. Please call us for special applications and further information.

i Note:
Not suitable for storage of flammable materials



Canister shelf

The canister shelf has a handle on the left and right and a centre lip. It is only 27 E (451 mm) deep so there is enough room in the front area for the canister tap.



Built-under drainage tray for oil cabinet

The built-under drainage tray of the oil cabinet has a leak-proof welded construction according to the Water Resources Act Sec. 19/StawaR (German directive on steel trays) and has a test certificate. It has a volumetric capacity of 40 l. Art. no. **14.995.000**



Drip trays

The drip trays feature a leak-proof welded construction according to StawaR (German directive on steel trays) and have a test certificate.

